

# How to order TUBE

## Suspended & Wall-Mounted Lighting

Client : \_\_\_\_\_ Project : \_\_\_\_\_

Order # : \_\_\_\_\_ Qty : \_\_\_\_\_ Date : \_\_\_\_\_

### HOW TO ORDER

Example of use 

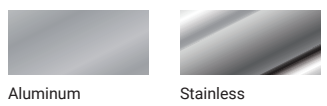
MODEL	FINISH	LENGTH	CCT	LENS	MOUNT	ENDCAP	VOLTAGE
SPL9200	3	36	30K	OPAL	SUSP/C	BN	120

MODEL	LENGTH	CCT	LENS	MOUNT	ENDCAP	VOLTAGE
TUBE			OPAL			
	12 = 12 INCH (5W) 20 = 20 INCH (8W) 24 = 24 INCH (10W) 36 = 36 INCH (16W) 48 = 48 INCH (20W) 0 = OTHER	30K = 3000K 41K = 4100K		SUSP/C = Susp. kit with canopy SUSP/S = Susp. kit without canopy SUSP/V = Vertical susp. kit WL* = Low canopy WC* = Center canopy WH* = Higher canopy  *12-36 inch	ALU = Aluminum BN = Brushed nickel  0 = OTHER	120 = 120VAC non-dimm. 120D = 120VAC dimm. 240 = 240VAC non-dimm.  CV = Constant voltage, 12V or 24V

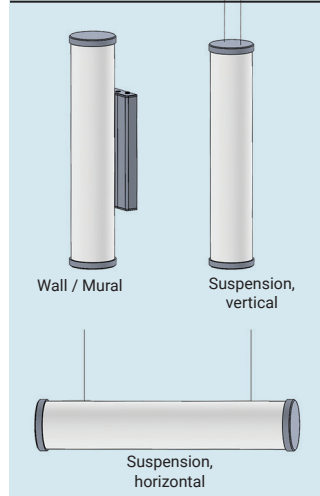
### Certifications



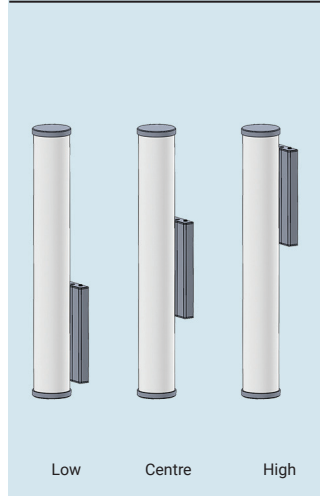
### Endcaps



### Mount



### Wall Options



### Features

- Made in North America
- Durable construction: Alcoa 6063T-5 aluminum, stainless steel, opal acrylic diffuser
- 600 lumens per foot (1960 lm/m)
- Easy installation
- Custom length available up to 12 feet long, with remote driver
- Dimmable (use Lutron CTCL-153P-Skylark or Diva)

